

# Installation Instructions

## Ball Glove

Part # SC038



**ID SCULPTURE**

PLAY. CLIMB. EXPLORE.

### Specifications: Ball Glove

- Material: GFRC Concrete with Structural Foam
- Approximate uninstalled Size: 8'-1" x 10'-2" x 9'-3" Tall
- Approximate Weight: 8800 Lbs
- Maximum fall height: 7'-11" (with 1' of protective surfacing)
- Age group: 5-12 years old

591 South Boulevard Street  
Gunnison, Colorado 81230  
info@idsculpture.com  
970-641-1747

### Required Parts (included):

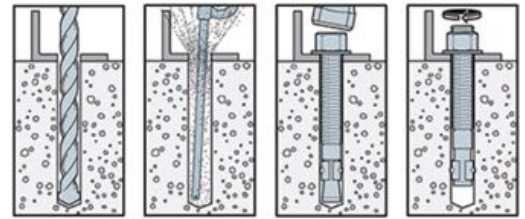
- Ball Glove GFRC Sculpture
- 4"x4"x3/8" aluminum mounting brackets: 4 ct
- 5/8"X 7" SS Wedge Anchor: 4 ct
- Bolt Hanger (lifting eye): 4 ct
- "Ball Glove" drawing set

### Recommended Equipment (not included):

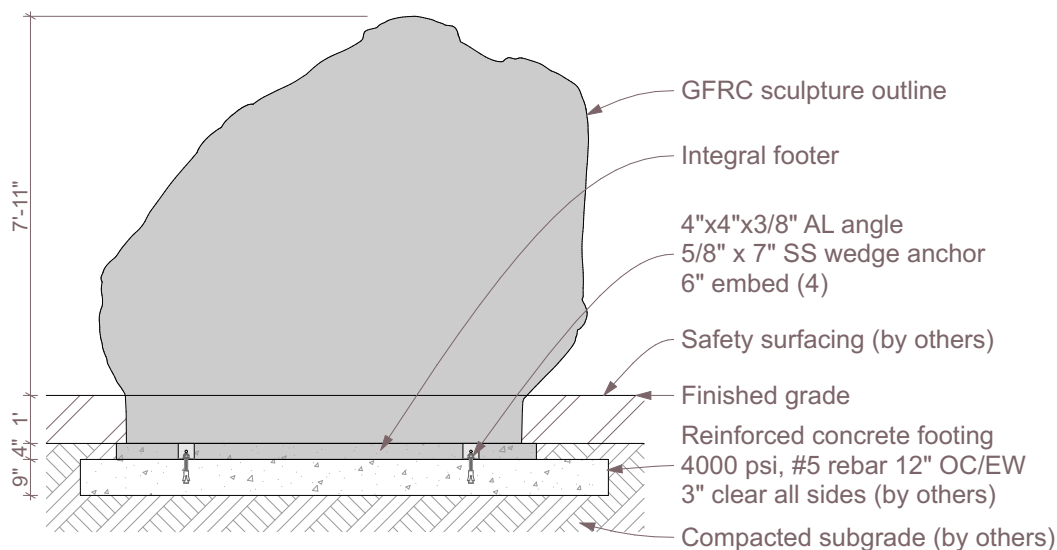
- Hammer Drill
- 5/8"x 10" concrete drill bit
- Air compressor
- Hammer
- 15/16" Wrench
- 12' lifting straps: 4 ct
- 6' Spreader bar
- 1/2" quick link: 4 ct
- Large adjustable crescent wrench
- Lift: Reach Type Forklift 12,000lb Capacity or Crane

### Important Notes:

- *Warning: Installation over a hard surface such as asphalt, or packed earth may result in serious injury or death from falls.*
- *It is the responsibility of the installer to ensure all components are installed in compliance with ASTM F-1487.*
- *All site built footings should be allowed to cure for a minimum of 48 hours prior to installation.*



Typical Wedge Anchor Installation



Section

# Installation Instructions

## Ball Glove

Part # SC038

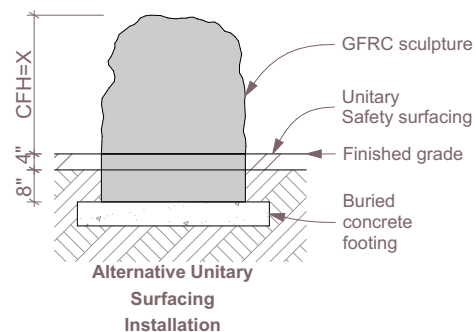
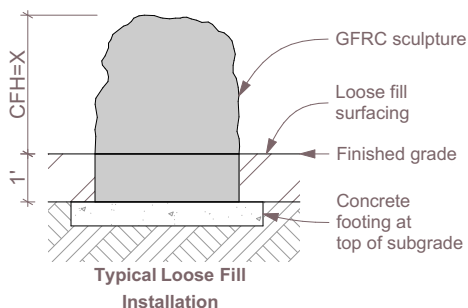


591 South Boulevard Street  
Gunnison, Colorado 81230  
info@idsculpture.com  
970-641-1747

## PRE-INSTALL CHECKLIST

Please review prior to ordering and installing ID Sculpture products.

- ☐ 1. Verify that you have the recommended lifting equipment to unload and install your component, as specified by the installation instructions. Please check the installation instructions for the weight of each component and shipping dimensions.
- ☐ 2. Develop a proper plan to access the site and control access prior to opening.
- ☐ 3. Call your local utilities to locate any potential existing below grade equipment?
- ☐ 4. FOR ALL SCULPTURES: Verify you have accounted for adjustments to the footing depth based on your choice of safety surfacing material. Footing depth must be adjusted to compensate for the depth/thickness requirements of the selected safety surfacing (*see diagrams below*). Layout drawings show the uninstalled dimensions of the component. If you require a modification to a standard component, please notify ID Sculpture when placing your order. *Additional charges may apply.*



\*Critical Fall Height (CFH)

- ☐ 5. Verify that you have installed any required footings prior to the arrival of your sculptures. Please note, footings should be allowed to cure for a minimum of 7 days.

### Important Safety Note:

Please install and maintain adequate protective surfacing under and around your equipment. Never let children play on the equipment before protective surfacing is installed. Please consult ASTM F1487 for more information.

# Installation Instructions

## Ball Glove

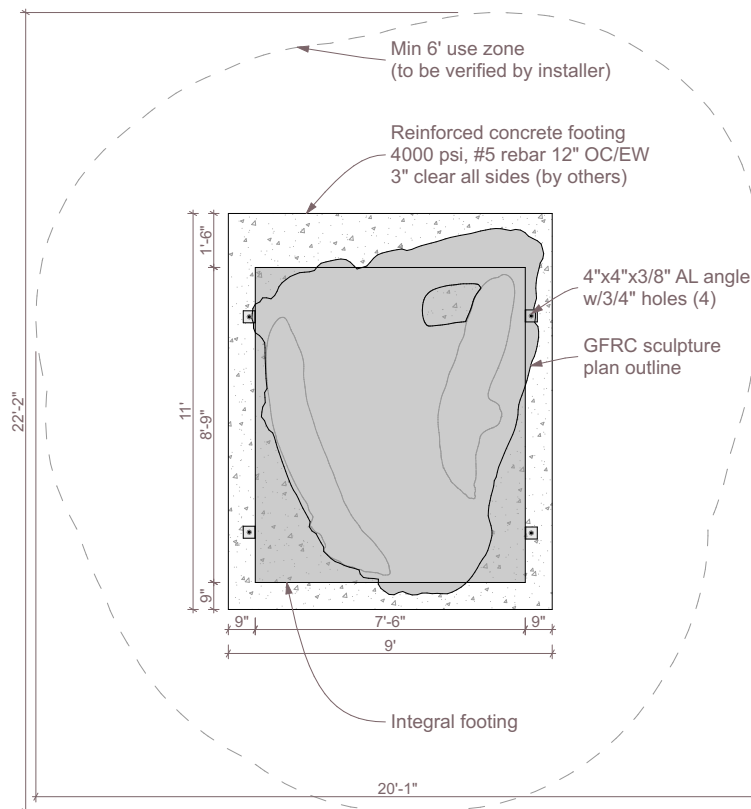
Part # SC038



591 South Boulevard Street  
Gunnison, Colorado 81230  
info@idsculpture.com  
970-641-1747

### Sculpture Installation:

1. Locate and construct the footer based on the provided layout plan drawing. Allow for 48-hour minimum cure time for poured concrete footings.
2. Make sure that the bolt hanger / lifting eyes (4ct) are securely attached to the bolts protruding from the base of the product. Secure the lifting straps to bolt hanger / lifting eyes using  $\frac{1}{2}$ " quick links (refer to pick diagram).
3. Lift the sculpture using an appropriate reach forklift or crane taking care to equalize the load on straps.
4. Set the product in place on the footing, verify all use zones as defined by ASTM 1487 before drilling anchor holes.
5. Remove the bolt hangers, replace the nut over mounting brackets.
6. Drill through the holes in the mounting brackets with the appropriate hammer drill bit to a minimum depth noted in the layout plan drawing, clean holes with compressed air and brush.
7. Install the wedge anchors with hammer and tighten with wrench.
8. Install resilient surfacing material in accordance with layout guidelines, and ASTM standards.



Plan

# Installation Instructions

## Ball Glove

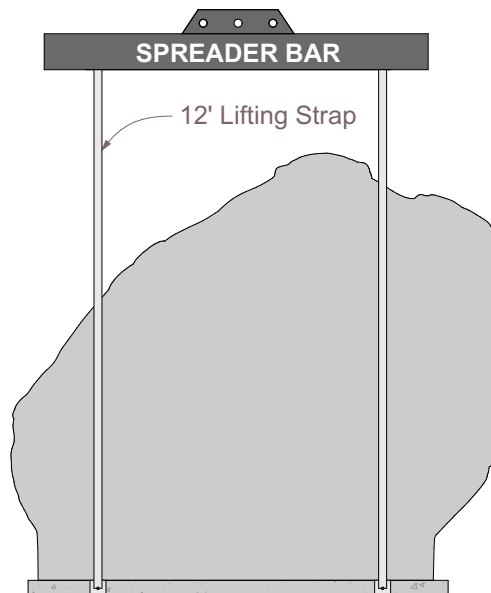
Part # SC038



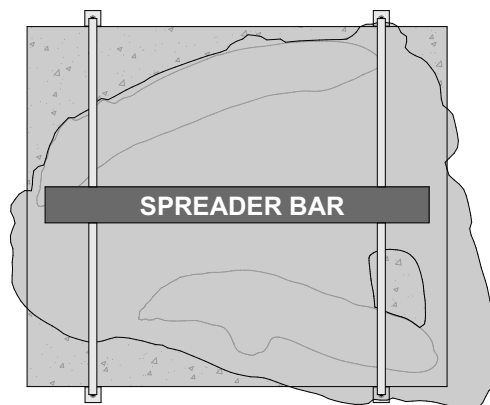
**ID SCULPTURE**

PLAY. CLIMB. EXPLORE.

591 South Boulevard Street  
Gunnison, Colorado 81230  
info@idsculpture.com  
970-641-1747



Pick Diagram\_Section



Pick Diagram\_Plan